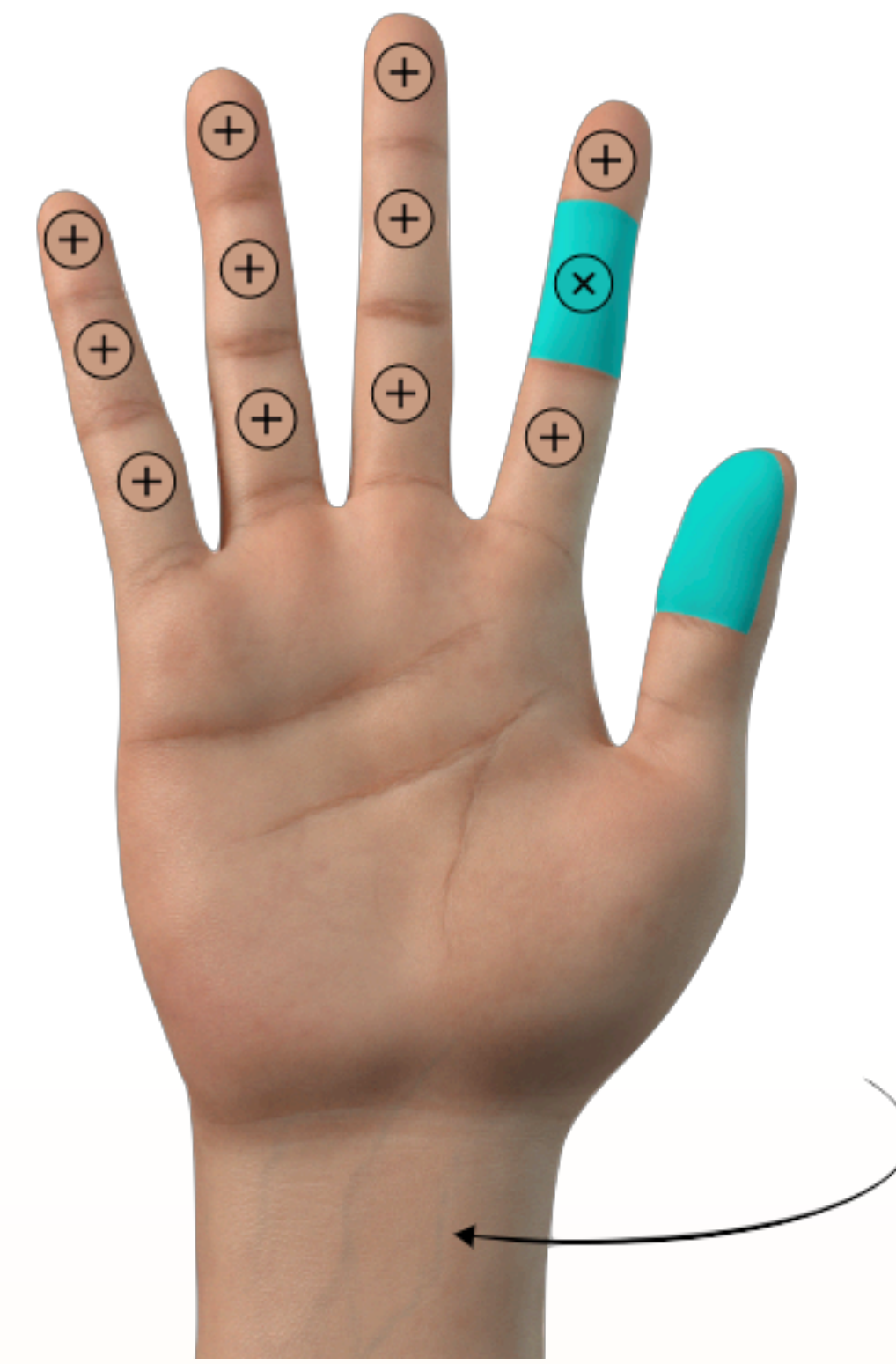


Smart Glove Maker

A Design Tool for Creating Smart Gloves

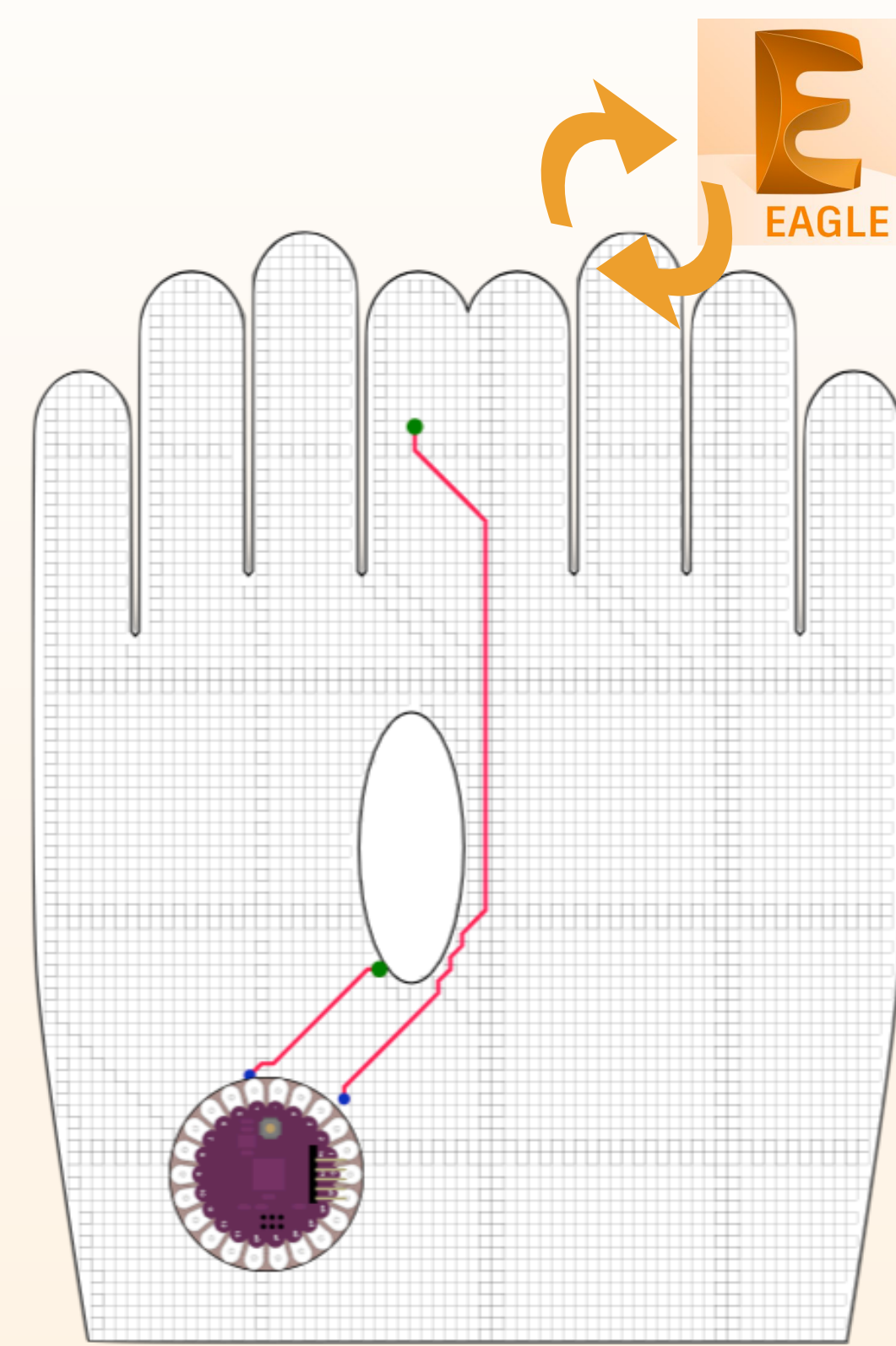
Nur Al-huda Hamdan, David Garcia Olivares, Michal Slupczynski, Jan Borchers

The Smart Glove Maker (SGM) is a web-based design tool for novice users to create a smart glove in a few steps using an embroidery machine. The SGM is based on the **Sketch&Stitch** system.



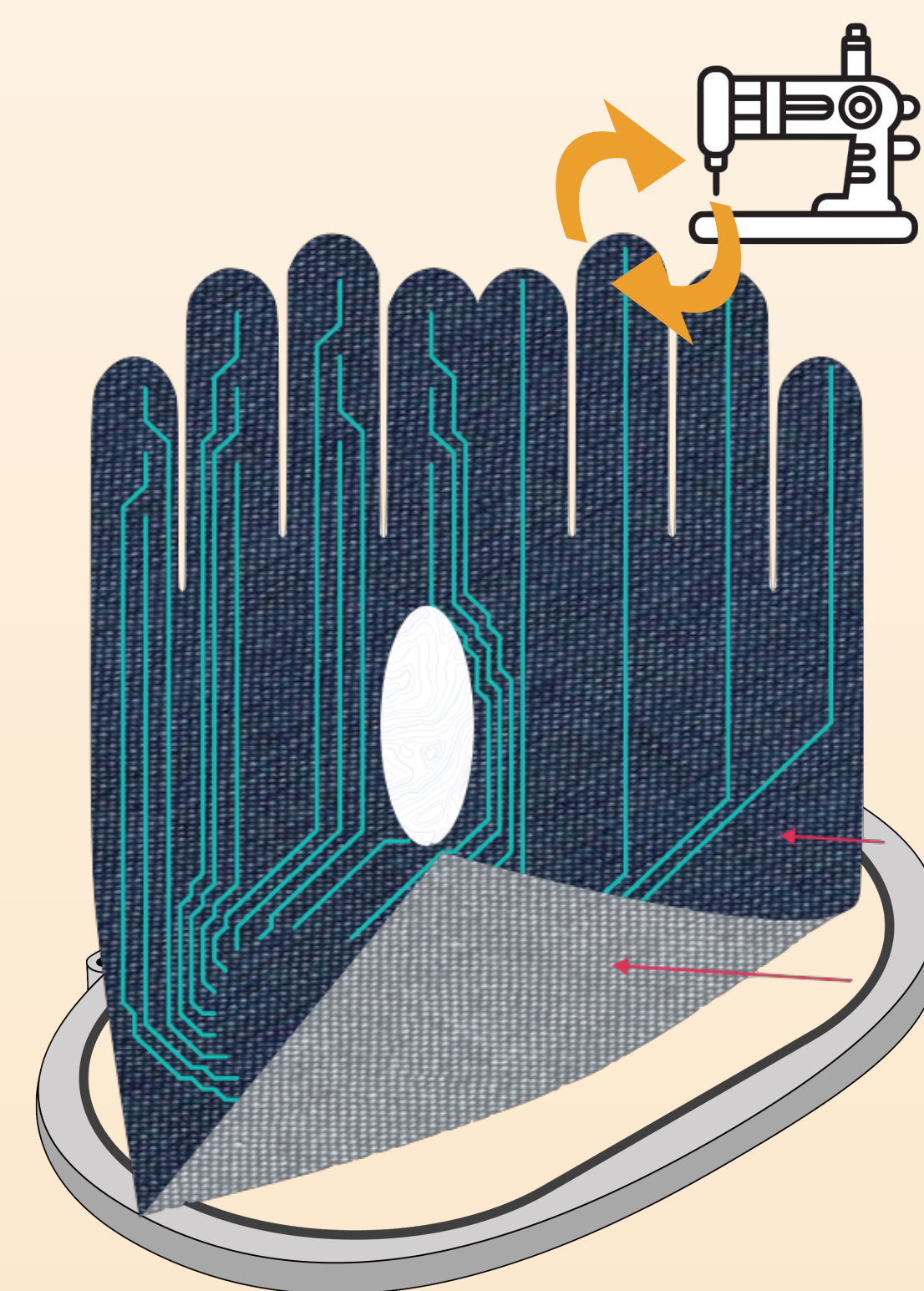
Step 1: Design

The user simply clicks on the illustrated hand to define the locations of the interactive buttons on the glove.



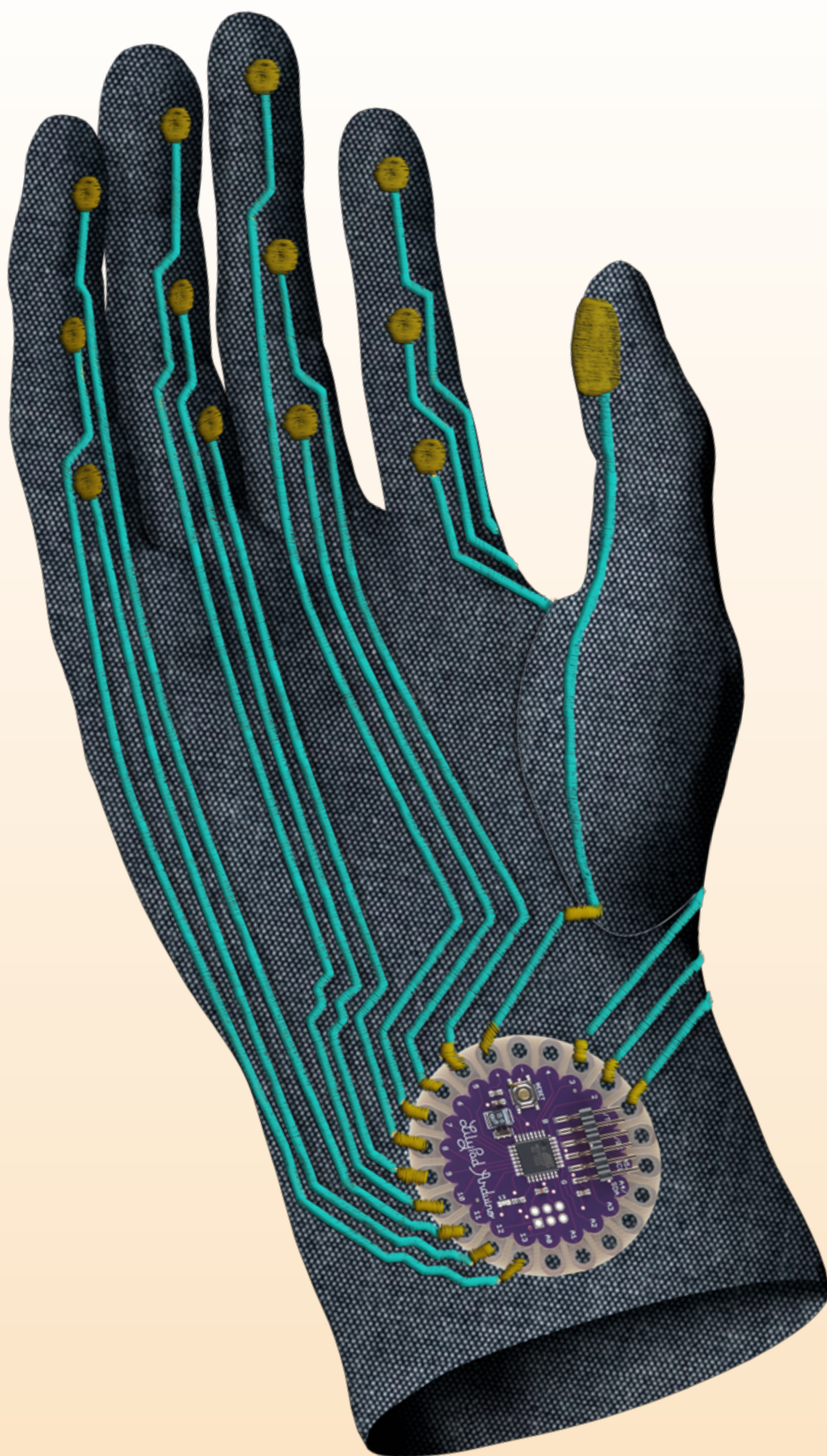
Step 2: Connect

The SGM communicates with Eagle PCB design software to optimize the routing of traces between the buttons and a central controller.



Step 3: Embroider

The SGM converts Eagle files to a stack of embroidery patterns. The user uses an embroidery machine to stitch the glove. She then follows assembly instructions on the SGM interface.



Step 4: Program

The user uses the SGM interface to program the glove by demonstration. The SGM generates the code and uploads it to the smart glove controller automatically.